









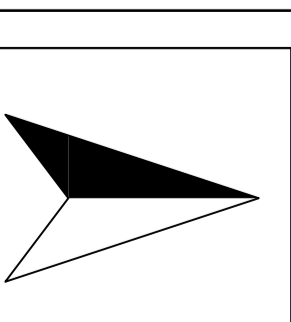


Areas of polygon classes of immission levels  
Noise Level daytime

	<= 35.0 dB(A)
	<= 40.0 dB(A)
	<= 45.0 dB(A)
	<= 50.0 dB(A)
	<= 55.0 dB(A)
	<= 60.0 dB(A)
	<= 65.0 dB(A)
	<= 70.0 dB(A)
	<= 75.0 dB(A)
	<= 80.0 dB(A)

Zgomotul aeroportuar  
noapte  
calculat 4m

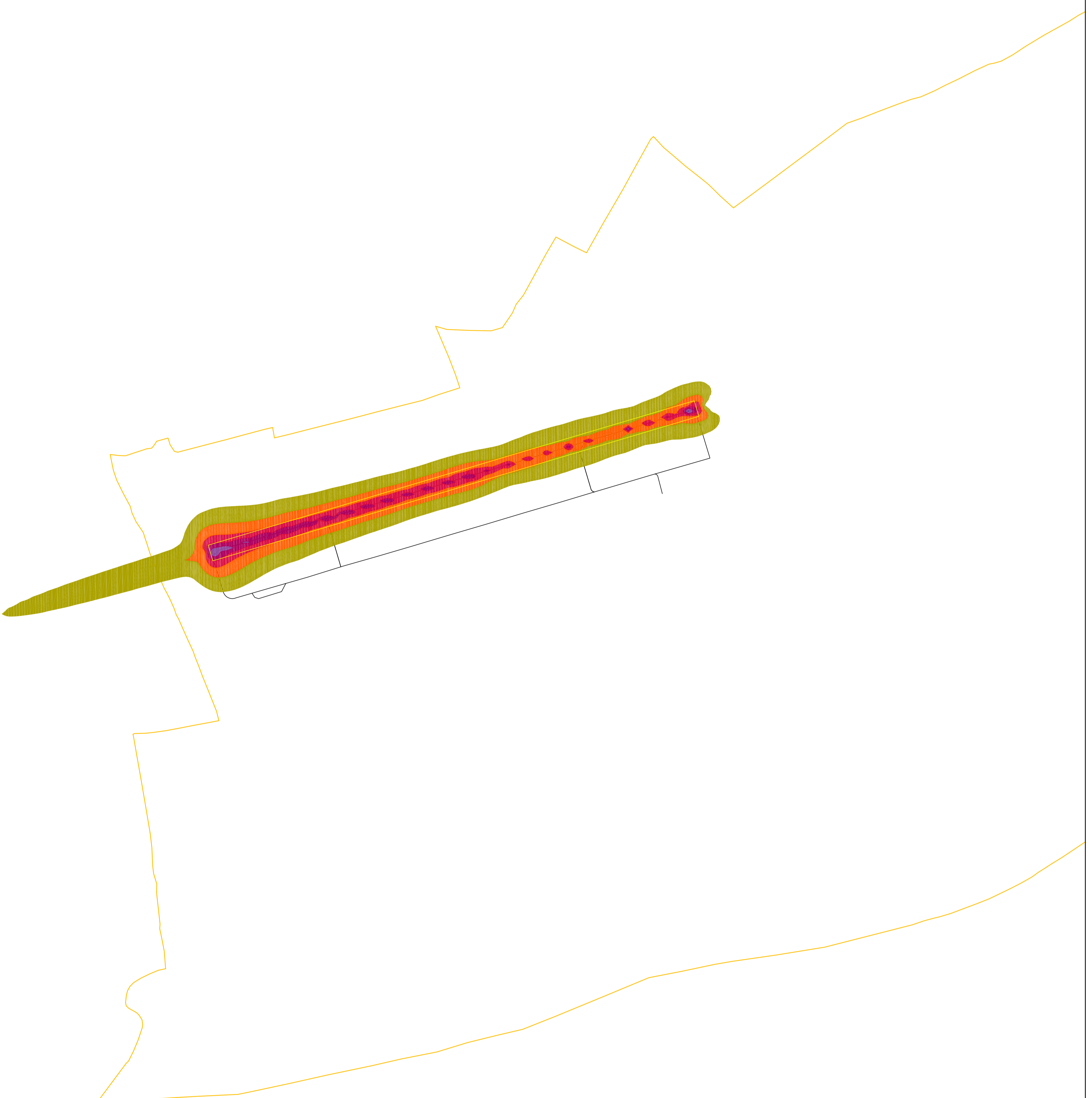


editia 2  
02.10.2017  
SCARPA 1:10000

Zgomot aeroport  
Lnoapte

LRBC - Aeroportul  
International Bacau

Enviro Consult  
Tel/Fax: (021) 311-8080  
Zgomotul e muzica pentru noi  
www.envi.ro



**Areas of polygon classes of immission levels Noise Level daytime**

≤	35.0 dB(A)
≤	40.0 dB(A)
≤	45.0 dB(A)
≤	50.0 dB(A)
≤	55.0 dB(A)
≤	60.0 dB(A)
≤	65.0 dB(A)
≤	70.0 dB(A)
≤	75.0 dB(A)
≤	80.0 dB(A)

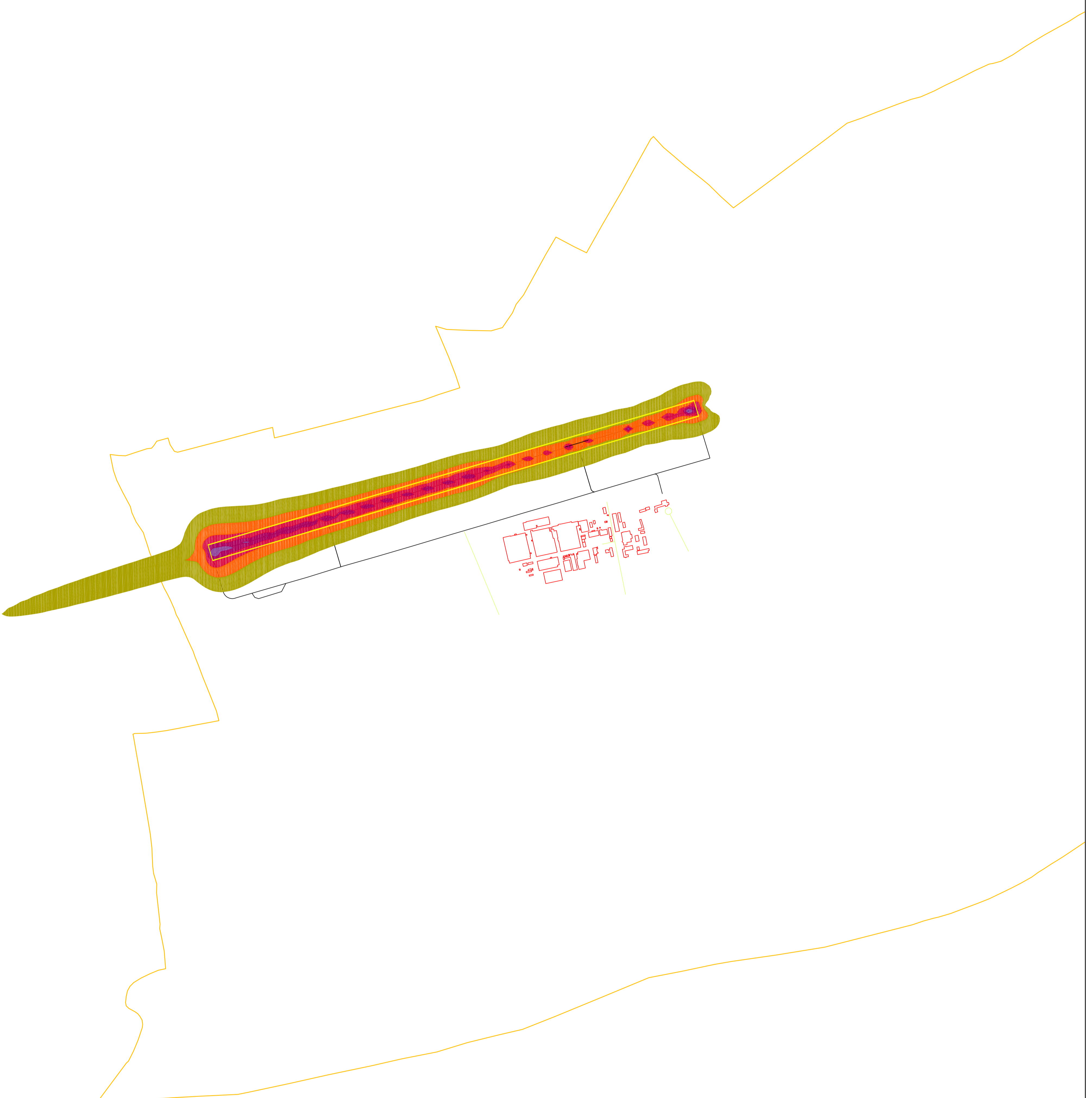
Zgomot aeroportuar zi-seara-noapte calcul 4m

editia 2  
02.10.2017  
SCARPA 1:10000  
plansa 2/3

Zgomot aeroport Lzsn

LRBC - Aeroportul International Bacau

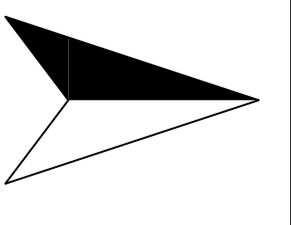
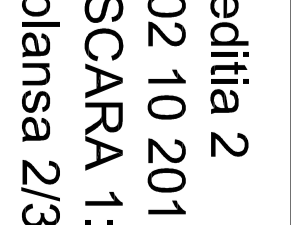
Enviro Consult  
Tel/Fax: (021) 311-8080  
Zgomotul e muzica pentru noi  
www.envi.ro



**Areas of polygon classes of immission levels**  
Noise Level daytime

≤	35.0 dB(A)
≤	40.0 dB(A)
≤	45.0 dB(A)
≤	50.0 dB(A)
≤	55.0 dB(A)
≤	60.0 dB(A)
≤	65.0 dB(A)
≤	70.0 dB(A)
≤	75.0 dB(A)
≤	80.0 dB(A)

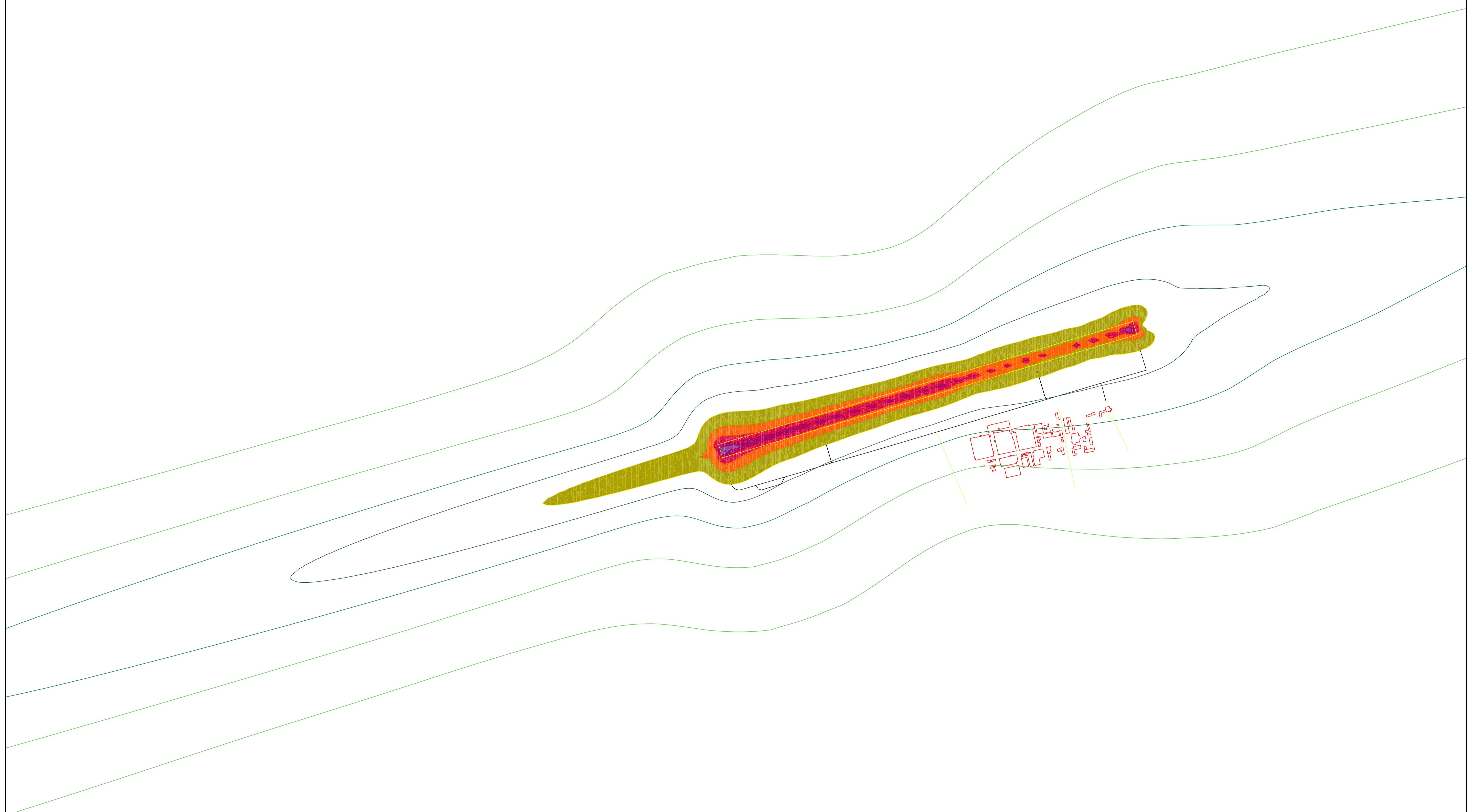
Zgornot aeroportuar  
zi-seara-noapte  
calculi 4m

	editia 2
	02.10.2017
	SCARPA 1:10000
	plansa 2/3

Zgornot aeroport  
Lzsn

**LRBC - Aeroportul  
International Bacau**

**Enviro Consult**  
Tel/Fax: (021) 311-8080  
Zgomotul e muzica pentru noi  
[www.enviro.ro](http://www.enviro.ro)



**Areas of polygon classes of immission levels**  
**Noise Level daytime**

≤	35.0 dB(A)
≤	40.0 dB(A)
≤	45.0 dB(A)
≤	50.0 dB(A)
≤	55.0 dB(A)
≤	60.0 dB(A)
≤	65.0 dB(A)
≤	70.0 dB(A)
≤	75.0 dB(A)
≤	80.0 dB(A)

Zgomot aeroportuar zi-seara-noapte calcul 4m

editia 2  
 02.10.2017  
 SCARPA 1:10000

Zgomot aeroport Lzsn

**LRBC - Aeroportul International Bacau**

**Enviro Consult**  
 Tel/Fax: (021) 311-8080  
 Zgomotul e muzica pentru noi  
 www.envi.ro



Areas of polygon classes of immission levels  
Noise Level daytime

- <= 35.0 dB(A)
- <= 40.0 dB(A)
- <= 45.0 dB(A)
- <= 50.0 dB(A)
- <= 55.0 dB(A)
- <= 60.0 dB(A)
- <= 65.0 dB(A)
- <= 70.0 dB(A)
- <= 75.0 dB(A)
- <= 80.0 dB(A)

Zgomot aeroportuar  
noapte  
calcul 4m

ediția 2  
2017  
SCARA 1:10000

Zgomot aeroport  
Lnoapte

LRBC - Aeroportul  
International Bacau

Enviro Consult  
Tel/Fax: (021) 311-8080  
Zgomotul e muzica pentru noi  
www.envi.ro



Areas of polygon classes of immission levels  
Noise Level daytime

- <= 35.0 dB(A)
- <= 40.0 dB(A)
- <= 45.0 dB(A)
- <= 50.0 dB(A)
- <= 55.0 dB(A)
- <= 60.0 dB(A)
- <= 65.0 dB(A)
- <= 70.0 dB(A)
- <= 75.0 dB(A)
- <= 80.0 dB(A)

Zgomot aeroportuar  
zi-seara-noapte  
calcul 4m

ediția 2  
2017  
SCARA 1:10000

Zgomot aeroport  
Lzsn

LRBC - Aeroportul  
International Bacau

Enviro Consult  
Tel/Fax: (021) 311-8080  
Zgomotul e muzica pentru noi  
www.envi.ro